

FUTURA+i



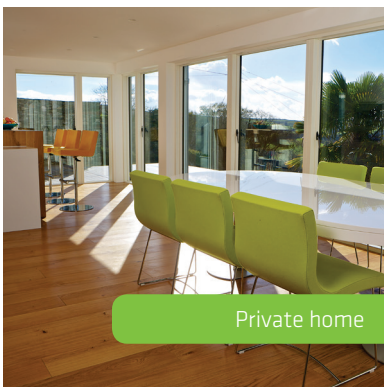
Elegant, innovative and inward opening

- Made of aluminium and PUR
- 53-mm slim sashes for lightness and maximum light
- High-insulating and energy saving

Futura+i is inward opening and features all the benefits of its sister series Futura+

A complete series that ensures maximum light, simple and slim lines as well as top-of-line energy savings and functionality. In contrast to Futura+, Futura+i also has an aluminium profile on the inside, making it the perfect choice for a completely maintenance-free solution, inside and outside. A window series that is built to last and provide energy savings far into the future.

Its sister series Futura+ is the corresponding outward opening series with the same external design. Together, the two series offer a complete host of functions that provide ample of scope in both new building and renovations without creating any architectural dilemmas.



Private home



Cirkelhuset, Køge



Solbærhaven, Valby

High-insulating PUR core

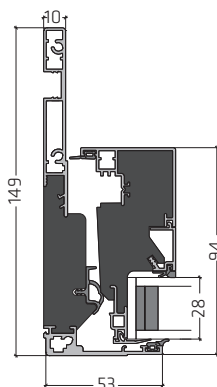
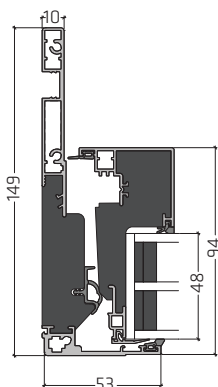
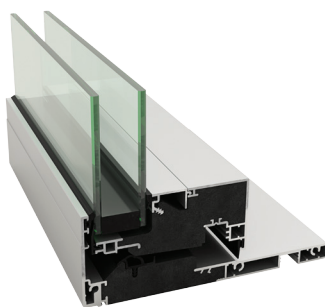
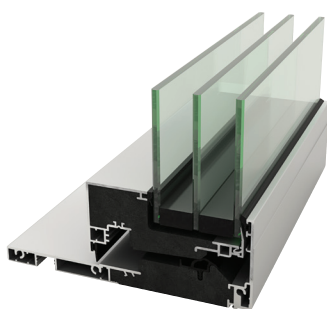
We have integrated a high-insulating PUR (polyurethane) core between the inside and outside aluminium profiles which gives the windows and doors groundbreaking performance in terms of total energy costs. The robust PUR ensures maintenance-free surfaces in the window's 'wet' frame zone and thus longer life-time and total economy. The innovative thinking behind the design places strong focus on the environment, reducing energy consumption and results in economic savings.

Free security package

Our solid quality fittings make our windows and doors highly resistant to uninvited guests. The glued glazing is common to all of Idealcombi's product range. As standard, all windows and doors in Futura⁺i come with anti-theft fittings, safety striker plates and several closing points.

Triple-glazed window

Double-glazed window



Inward opening

Inward opening with triple glazing

$$E_{\text{ref}} = +27.7$$
$$U_w = 0.83$$

A

Inward opening with double glazing

$$E_{\text{ref}} = -8.2$$
$$U_w = 1.39$$

B

A QUICK OVERVIEW

- Maintenance-free surfaces
- Maintenance-free wet zone in the rebate
- Smooth and elegant external aluminium panel
- High-insulating PUR core between outside and inside to reduce any thermal bridge and heat loss
- Free security package
- 10-year warranty
- Uniform design regardless of functionality